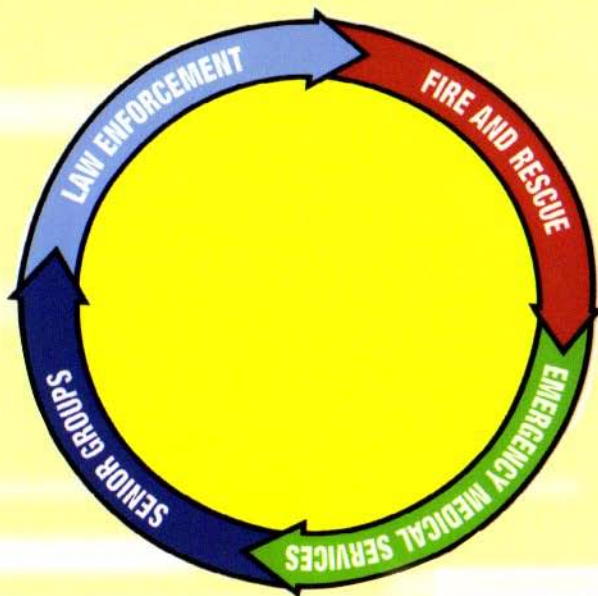


YELLOW DOT PROGRAM



**Citizens And First Responders
Working Together To Preserve The**

"GOLDEN HOUR"

Of Emergency Care

The Yellow Dot Program was created to assist citizens following automobile crashes when they might not be able to communicate for themselves.

HOW DOES THE YELLOW

The four items needed are a photo, a completed personal information form, a **YELLOW DOT** decal, and a **YELLOW DOT** folder.



First, a photograph is taken of the participant. The photo is later taped to the front side of the completed information sheet.



DOT PROGRAM WORK?

The next step is to complete the form which contains the participant's information; name, address and phone number of person to contact in case of an emergency; medical history; allergies; medications and dosage taken; and names of doctors caring for the participant.



A **YELLOW DOT** is placed in the lower left corner on the outside of the rear windshield of the participant's automobile.....



or the lower left corner of a motorcycle's license plate to alert First Responders that vital information can be found in the vehicle or on the cycle.



The final step is to place the completed information sheet, with picture attached, into the **YELLOW DOT** folder and then place the folder into the glove box of autos or storage compartment of motorcycles where First Responders are trained to look when they see a **YELLOW DOT** on the auto or motorcycle. That's all there is to it!



*Take Advantage
of this FREE program.*

A **YELLOW DOT** in the rear window of your vehicle will alert all First Responders to the vital information in your glove compartment. This will help to ensure that you receive the medical attention you need during that first **"GOLDEN HOUR"** after a crash or other emergency involving your vehicle.

The **YELLOW DOT PROGRAM** is the first of its kind in the State of Alabama. The program is a cooperative effort between Sheriff's Deputies, local Police Officers, State Troopers, Emergency Medical Services, local Fire Departments, and Citizen Groups to assist individuals in a time of need when they might not be able to help themselves.

*Who Should Sign
Up for Yellow Dot?*

EVERYONE!

Anyone can be involved in a crash or have a medical emergency. In the seconds directly following a crash, seconds count. Protect yourself and your loved ones by signing up for Yellow Dot today!

*Need More Information?
Call*

205 932-5367

Where to sign up:

Berry Town
Hall
Fayette City
Hall
Glen Allen
Town Hall

Sponsored and funded by:

**Your Local Governor's
Highway Safety Office**

**Alabama Department of
Economic and Community
Affairs, Law Enforcement
Traffic Safety Division**